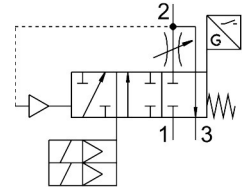


# Soft start/quick exhaust valve MS6-SV-1/2-D-10V24-2M8-SO-AG

Part number: 8038490

**FESTO**



[General operating condition](#)

## Data sheet

Feature	Value
Series	MS
Size	6
Width dimension	62 mm
Safety function	Exhausting Prevention of unexpected start-up (pressurization)
Safety integrity level (SIL)	Exhaust/SIL 3 Avoidance of unexpected start-up (pressurization)/SIL 3
Performance Level (PL)	Exhaust/category 3, performance level d Avoidance of unexpected start-up (pressurization)/category 3, performance level d
Note on forced dynamization	Switching frequency at least once a month
Structural design	Piston seat
Lap	Underlap
Actuation type	Electrical
Pilot air supply port	Internal
Sealing principle	Soft
Exhaust air function	Without flow control option
Position sensing principle	Piston magnet principle
Conforms to standard	DIN EN ISO 13849-1 DIN EN ISO 13849-2
Manual override	None
Reset method	Mechanical spring
Type of control	Pilot-controlled
Symbol	00995704
Valve function	3/2, closed, monostable Pressure build-up function
Operating pressure	0.35 MPa ... 1 MPa
Operating pressure	3.5 bar ... 10 bar
Pressure gauge	with pressure gauge
C value	19.3 l/sbar
b-value	0.21
Standard nominal flow rate	4300 l/min
Standard flow rate exhaust 6→0 bar	9000 l/min
Max. switching frequency	0.5 Hz
Switching time off	40 ms
On switching time	130 ms

Feature	Value
Duty cycle	100%
Signal status display	LED Switching outputs
Coil characteristics	24 V DC: 1.8 W
Nominal operating voltage DC	24 V
Permissible voltage fluctuations	+10 %/-15 %
Operating medium	Compressed air as per ISO 8573-1:2010 [7:4:4]
Information on operating and pilot media	Operation with oil lubrication possible (required for further use)
Corrosion resistance class (CRC)	2 - Moderate corrosion stress
Note on materials	RoHS-compliant
LABS (PWIS) conformity	VDMA24364-B1/B2-L
Noise level	75 dB(A)
Degree of protection	IP65 With plug socket
Temperature of medium	-10 °C ... 50 °C
Ambient temperature	-10 °C ... 50 °C
Storage temperature	-10 °C ... 50 °C
Shock resistance	Shock test with severity level 2 as per FN 942017-5 and EN 60068-2-27
Vibration resistance	Transport application test with severity level 2 as per FN 942017-4 and EN 60068-2-6
Certification	RCM compliance mark
KC characters	KC EMC
CE marking (see declaration of conformity)	As per EU EMC directive as per EU machinery directive As per EU RoHS directive
UKCA marking (see declaration of conformity)	To UK instructions for EMC To UK instructions for machines To UK RoHS instructions
Type of mounting	Optionally: Line installation With accessories
Mounting position	Any
Product weight	2110 g
Pneumatic connection 1	G1/2
Pneumatic connection 2	G1/2
Pneumatic connection 3	G1
Electrical connection	2-pin 2x plugs Form C as per EN 175301-803
Electrical connection, proximity sensor	2x cables with plugs 3-pin M8 Rotatable thread
Housing material	Die-cast aluminum
Seals material	NBR
Piston rod material	High-alloy stainless steel